

H. L. SPYKE & SON FRUIT CO.

Ft. Lauderdale, Florida

A STUDY OF PLANT LAYOUT

Submitted to: A. J. Spears

Submitted by: H. H. Spyke

H. L. SPYKE & SON FRUIT CO.

The H. L. Spyke and Son Fruit Co. was started in 1945. Their principle business is packing and shipping gift packages of citrus fruit.

Up to now they have operated in a rented building; however, they have expanded until a larger building is needed. The land has been leased for the site of a new packing house, but so far its erection is still in the future. As the plans for the new building have not been formulated, I will give my ideas.

The new plant will be bounded in front and in back by roads and on both sides by buildings, so the horizontal expansion will be limited. For this reason, I am in favor of a two story building. The upper story will be used to store box materials, ~~and~~ baskets, machine parts and other miscellaneous items that take up much vital room. Besides storage, the second floor will be used for the assembly of the boxes.

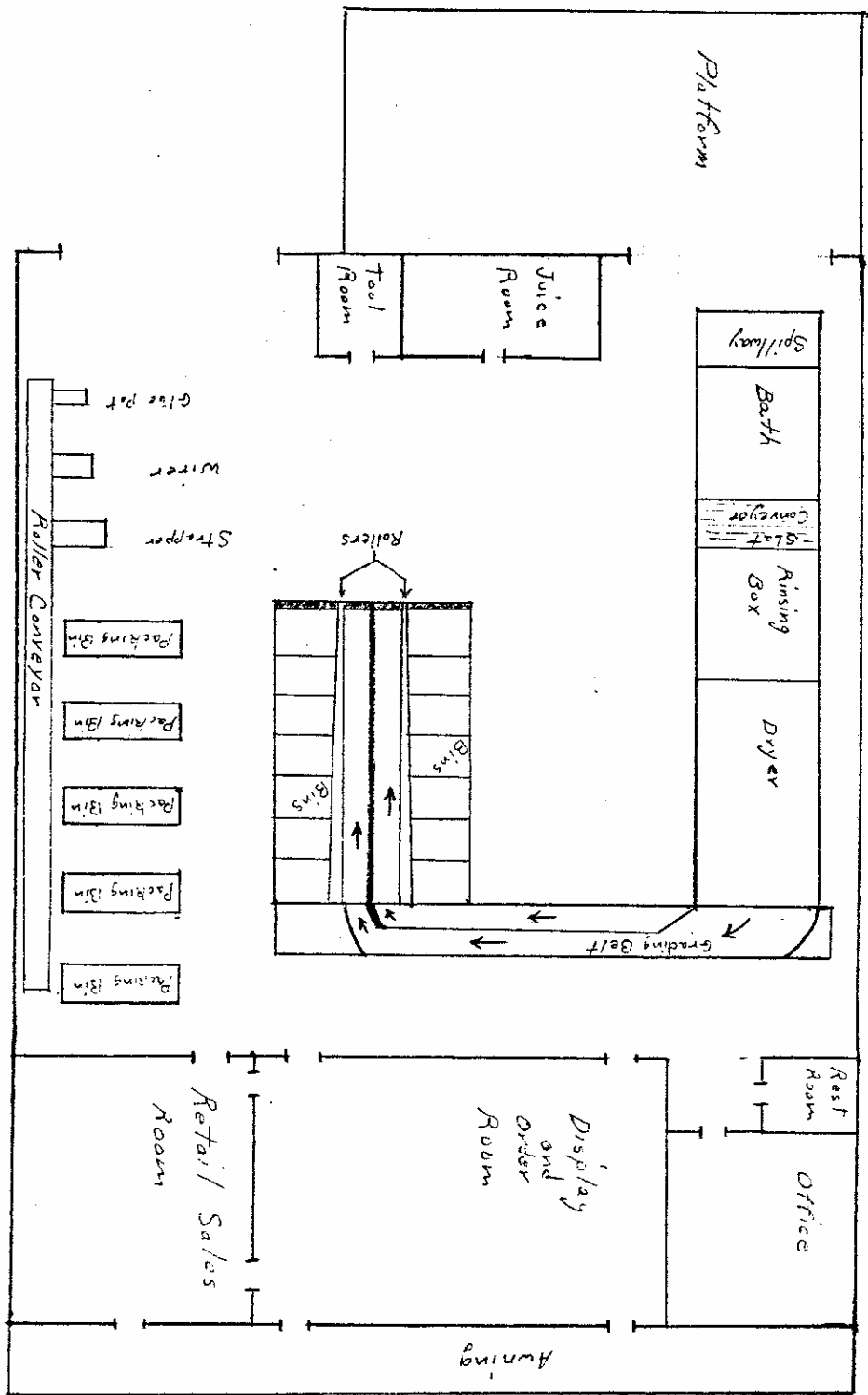
By utilizing the second floor in this manner, the ground floor will be available for packing. The layout of the second floor is relatively unimportant, because it will be used primarily for storage. The important layout is the ground floor. The main processing machines in the new plant will be the same as are now used, so they will be placed in approximately the same positions relative to each other. The position of these machines is important, because the rest of the layout must be made accordingly.

H.L. SPYKE and SON FRUIT CO.

Proposed Layout-Ground Floor

"N"

Spyke, H. H.



5

Instructor A. J. Spears

Days in Lab. _____

SCHOOL OF INDUSTRIAL ENGINEERING
GEORGIA INSTITUTE OF TECHNOLOGY

Report on Experiment No. _____

Title A STUDY OF PLANT LAYOUT

H. L. Spyke & Son Fruit Co.

Submitted by

Name H. H. Spyke Course IM 411 Date Performed Dec. 16, 1949

RECEIVED	RETURNED FOR CORRECTION	SEE PAGES	ACCEPTED

Observers:

Time for writing report _____

A